



COMMERCIAL FISHERIES RESEARCH FOUNDATION

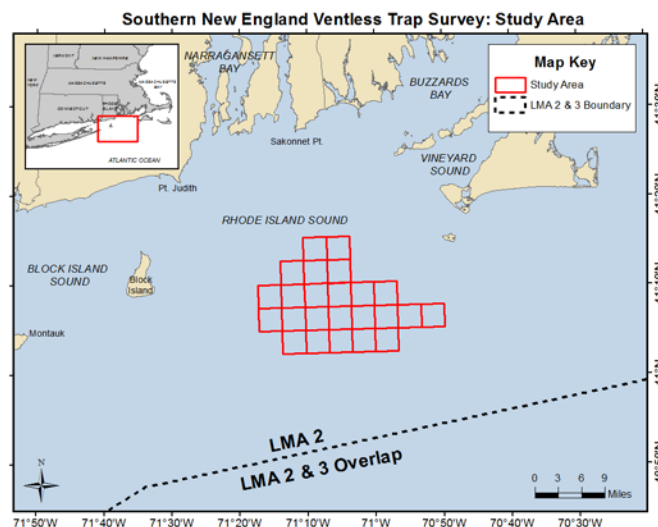
P.O. Box 278, Saunderstown, RI 02874
Phone: (401) 515-4892 | Fax: (401) 515-3537
www.cfrfoundation.org

CALL FOR APPLICATIONS: RI LOBSTER F/VS

Deadline: April 26, 2017

Project Description:

- The CFRF and URI are seeking three commercial lobster F/Vs to participate in the Southern New England Cooperative Ventless Trap Survey (SNECVTS) in the Cox's Ledge Wind Energy Area from May – November 2017 (see map below).
- This project is a continuation of the SNECVTS survey conducted in 2014/2015, and aims to assess the seasonal distribution, movement, and habitat use of the American lobster and Jonah crab in the Cox's Ledge Wind Energy Area.



Participant Responsibilities:

- Each F/V participant will charter 2 biologists for 3 days per month from May - November 2017.
- The first sampling day each month will be dedicated to baiting 80 traps (8 trawls of 10 traps) and conducting habitat surveys.
- The two remaining sampling days each month will be devoted to hauling the gear and sampling the catch at 8 stations (one trawl of 10 traps at each station).
- All sampling days within a month will be five days apart to achieve a standardized soak time.

Participant Requirements:

- Federal lobster permit holder
- Fishing vessel length greater than 35 ft.
- Fishing vessel with enclosed cabin
- Dedicated crew members (captain and deckhand)
- US Coast Guard certification & proof of fishing vessel safety inspection
- Certificate of insurance

Compensation:

- Each participant F/V will be compensated \$2,300 per sampling day from May to November (21 days total). The daily charter rate is intended to cover bait for 80 traps, fuel (sampling area ~30 miles offshore), a deckhand, and vessel time.
- Upon completion of all scheduled sampling days, each participant F/V will receive an additional stipend of \$1,800.
- \$1,000 will be provided to each participant F/V for initial project set-up (meeting attendance, gear preparation, gear transportation from storage to F/V, ect.)
- \$1,000 will be provided to each participant F/V for final break down of the project (meeting attendance, gear decommissioning, gear transportation to storage facility, etc.)
- CFRF will reimburse added insurance costs to cover members of the CFRF and URI staff onboard the vessel.
- All equipment, training, and technical support will be provided to each participant vessel without cost.

Timeline:

- May 2017- Training session for all sea samplers and participant fishermen
- May-November 2017 (7 months): Ventless trap survey with 3 sea days per month.
- **Deadline for applications: Wednesday, April 26, 2017**

Project Team:

- Anna Malek Mercer, CFRF
- Jeremy S. Collie, URI
- Thomas Heimann, CFRF
- Aubrey Ellertson, CFRF
- Matthew Griffin, RWU

Contact Information:

Thomas Heimann, Research Associate, CFRF

Email: theimann@cfrfoundation.org

Phone: (401)-515-4892

Project Website: www.cfrfoundation.org/snecvts